

# MONTHLY MEMBERSHIP PROGRESS REPORT

LOCATION OHIO

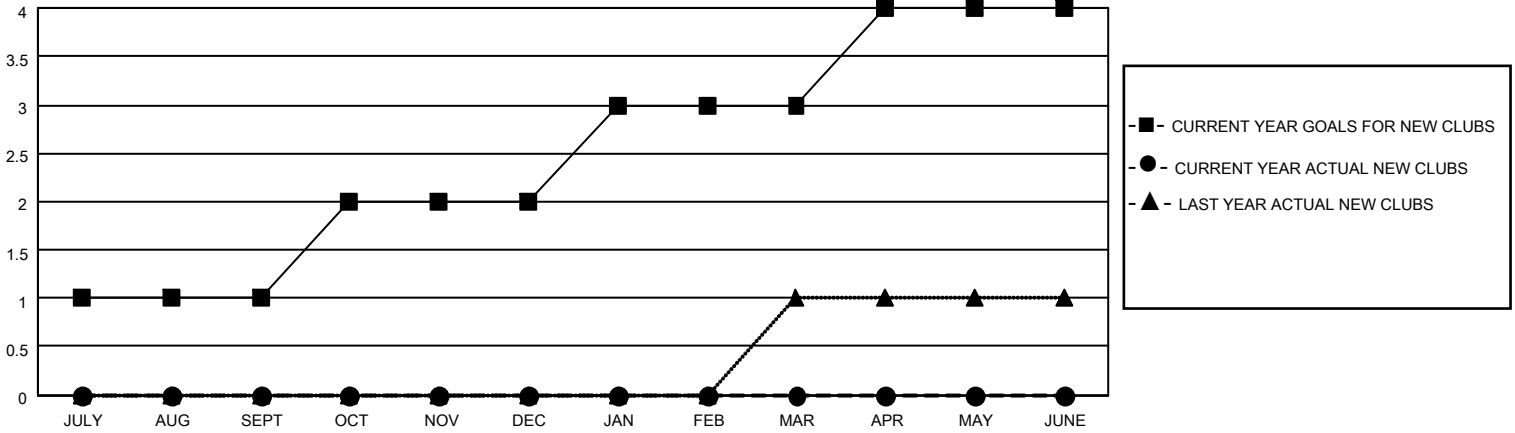
District 13 OH2

Results as of: 5/31/2023

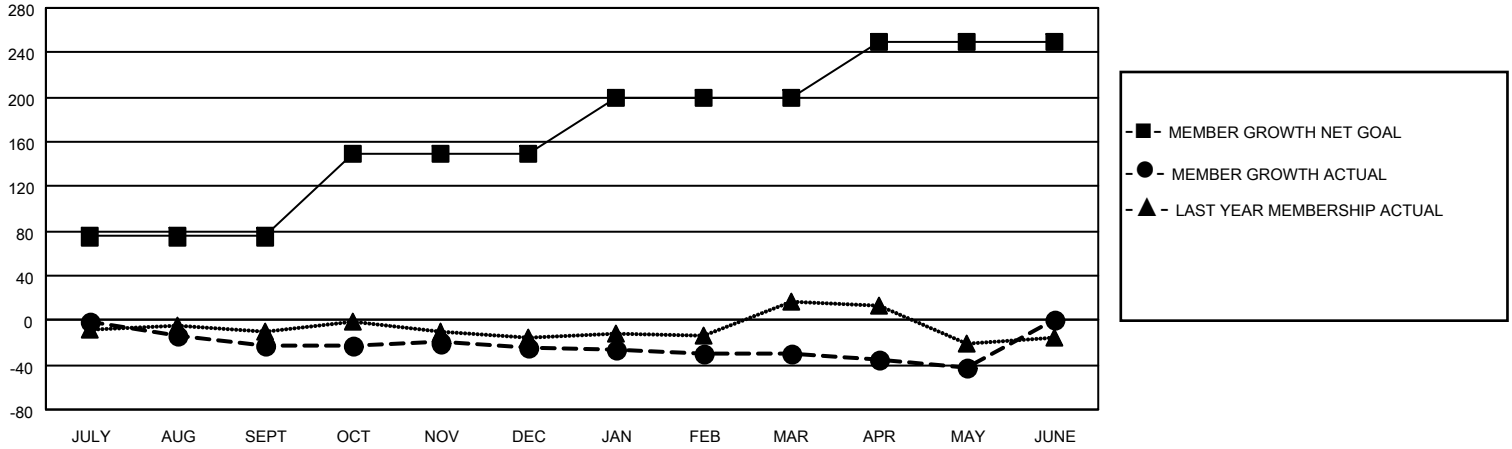
Clubs			
RESULTS FOR 2022-2023			
QUARTER	NEW CLUB GOAL	NEW CLUBS	DROPPED CLUBS
JULY/AUG/SEPT	1	0	0
OCT/NOV/DEC	1	0	0
JAN/FEB/MAR	1	0	1
APR/MAY/JUNE	1	0	1

Members			
RESULTS FOR 2022-2023			
QUARTER	MEMBER GROWTH NET GOAL	MEMBER GROWTH ACTUAL	DROPPED MEMBERS ACTUAL (including transfers)
JULY/AUG/SEPT	75	17	37
OCT/NOV/DEC	75	38	37
JAN/FEB/MAR	50	36	36
APR/MAY/JUNE	50	29	40

**GOALS AND ACTUAL NEW CLUBS CUMULATIVE**



**GOALS AND ACTUAL MEMBERS CUMULATIVE**



**DROPPED CLUBS: 2**

**35 CLUBS OF 57 ADDED 1 OR MORE NEW MEMBERS**

**GENDER DISTRIBUTION**

MALE	1,180 (69.66%)
FEMALE	514 (30.34%)
NON BINARY	0 (0.00%)
PREFER NOT TO ANSWER	0 (0.00%)

**DROPPED MEMBERS**

[CLICK HERE FOR CUMULATIVE MEMBERSHIP DATA](#)

DECEASED	18
CLUB CANCELLED	0
OTHER	132
<b>TOTAL</b>	<b>150</b>

TOTAL FAMILY UNIT MEMBERS	370
FAMILY MEMBERS PAYING HALF DUES	188